

RINGWOOD NATURAL HISTORY SOCIETY

Hosted Woodland Walk

Date: 7th May 2025
 Weather: Sunny
 Walk Leader: Hosted by Barry Deakin, arranged by Mike and Liz Read
 Attendees: 15

Barry invited us back for a second visit to his woodland this time to see it in the spring. A few years ago Barry purchased 6 acres of mixed woodland and has been carrying out management work including coppicing to encourage wildlife there ever since. He took us on a tour of his woodland beginning with a walk on the higher side of the wood, he had cleared and coppiced some of it over the winter, which had resulted in a magnificent show of bluebells. We then went for a cup of coffee at his shelter, built by himself using his own wood. Afterwards we went to the lower damper side where there are restored ponds to aid drainage. He has deer and foxes visiting and badger sets on site who have produced youngsters in previous years. Around the site there are several corrugated steel sheets with reptiles in residence underneath along with some Glow-worm larva. After lunch we went to the top of the wood where Barry showed us his charcoal burner and explained how it worked, he had carried out a burn which was cooling down, ready for the charcoal to be bagged up and sold on.

Many thanks to Barry for inviting us and for a very interesting and informative day.

Flowering Plants	Flowering Plants	Butterflies	Insects
Cow Parsley	Yellow Pimpernel	Brimstone	Red Headed Cardinal Beetle
Meadow Buttercup	Ground Ivy	Small White	Glow-worm Larva
Bluebells	Creeping Buttercup	Red Admiral	Flat Beetle
Water Avens	Redcurrant	Speckled Wood	Dark-edged Bee-fly
Cleavers	Bog Stitchwort	Peacock	Hornet
Wood Speedwell	Hawthorn		Yellow-banded Pond Fly
Germander Speedwell	Cuckoo Flower	Dragonflies etc.	Scorpion Fly
Bush Vetch	Greater Stitchwort	Small Red Damselfly	Buff-tailed Bumblebee
Herb Robert	Crab Apple	Beautiful Demoiselle	
Wild Strawberry	Moschatel	Broad-bodied Chaser	
Daisy	Black Bryony		Birds
Silverweed		Fungi	Robin
Bugle	Grasses etc	Sulphur Tuft	Song Thrush
Woodruff	Pendulous Sedge	King Arthur's Cakes	Blue Tit
Primrose	Wood Sedge	Elf Cup	Chaffinch
Wood Spurge	Wood Melick	Eyelash Fungus	Blackcap
Dandelion	Hairy-wood Rush		Great Tit
Early Dog Violet		Reptiles	Blackbird
Yellow Archangel	Ferns	Slow Worms	Wren
Wood Anemone	Common Polypody	Grass Snakes	Mallards
Lesser Celandine			Nuthatch



Slow Worm by Gerry Traves



Scorpion Fly by Gerry Traves



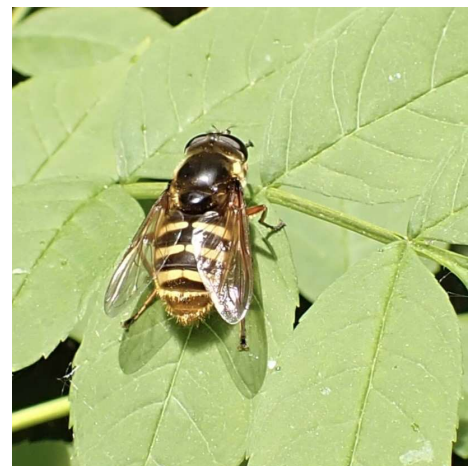
Glow-worm Larva by Gerry Traves



Broad Bodied Chaser by Gerry Traves



Homo Sapiens by Audrey Walker



Yellow Banded Pond Fly by Christine Storey